

T.C.	REPUBLIC OF TURKEY
ULAŖTIRMA DENİZCİLİK VE HABERLEŖME BAKANLIĐI	MINISTRY OF TRANSPORT MARITIME AFFAIRS AND COMMUNICATIONS
KARAYOLLARI GENEL MÜDÜRLÜĐÜ	GENERAL DIRECTORATE OF HIGHWAYS
TRAFİK GÜVENLİĐİ DAİRESİ BAŖKANLIĐI	DEPARTMENT OF TRAFFIC SAFETY
ULAŖIM ETÜTLERİ ŖUBESİ MÜDÜRLÜĐÜ	DIVISION OF TRANSPORTATION STUDIES

## KARAYOLU ULAŖIM İSTATİSTİKLERİ (2012)

### Highway Transportation Statistics

**UE01 - TÜRKİYE VE KARAYOLU İSTATİSTİKLERİ**  
Turkey and Road Statistics

**UE02 - 31 ARALIK TARİHİ İTİBARI İLE KARAYOLU AĐI**  
Road Networks As Of 31st December

**UE03 - 31 ARALIK TARİHİ İTİBARI İLE KARAYOLU AĐININ SATIŖ CİNSLERİNE GÖRE DAĐILIMI**  
Surface Types of Road Network As Of 31st December

**UE04 - OTOYOL, DEVLET VE İL YOLLARI ÜZERİNDE SEYİR VE TAŖIMALAR**  
Circulation and Transportation on Motorways, State and Provincial Roads

**UE05 - OTOYOL, DEVLET VE İL YOLLARI ÜZERİNDE TAŖIT VE YOLCU SEYİRLERİ**  
Circulation of Vehicles and Passengers on Motorways, State and Provincial Roads

**UE06 - AĐIRLIKLI ORTALAMA GÜNLÜK TRAFİK**  
Weighted Average Daily Traffic

**UE07 - ULAŖIM YOLLARINA GÖRE YÜK VE YOLCU TAŖIMASI**  
Transportation Of Freight And Passenger According To Transportation Type

**UE08 - MOTORLU KARA TAŖITLARI**  
Motor Vehicles in Use

**UE09 - ULAŖIMLA İLGİLİ BAZI SOSYO-EKONOMİK VERİLER**  
Some Socio-economic Values Related with Transportation

**UE10 - ENERJİ TÜKETİMİ**  
Energy Consumption



**UE01 - TÜRKİYE VE KARAYOLU İSTATİSTİKLERİ**  
Turkey and Road Statistics

2012

TÜRKİYE YÜZÖLÇÜMÜ (Km <sup>2</sup> )	İZDÜŞÜM ALAN GERÇEK ALAN	<b>779 452</b> <b>814 578</b>	Datum Area Real Area	Area of Turkey (Sq . Km)
NÜFUS	2012	<b>75 627 384</b>	Population	
KARAYOLU AĞI (Km) (31 ARALIK 2012)	OTOYOL DEVLET YOLU İL YOLU <b>TOPLAM</b>	<b>2 127</b> <b>31 375</b> <b>31 880</b> <b>65 382</b>	Motorways State Roads Provincial Roads <b>Total</b>	Road Networks (Km) Dec 31.2012
	KAPLAMALI YOL YÜZDESİ	<b>%94</b>	Percentage Paved	
KM <sup>2</sup> ALANA DÜŞEN YOL YOĞUNLUĞU ( M )		<b>84</b>	Density of Total Network in meters per sq . Km <sup>2</sup>	
KULLANIMDAKİ TAŞITLAR	OTOMOBİL	<b>8 648 875</b>	Passenger Car	Vehicles in Use
	MINİBÜS	<b>396 119</b>	Minibus	
	OTOBÜS	<b>235 949</b>	Buses and Coaches	
	KAMYONET	<b>2 794 606</b>	Pickup	
	KAMYON	<b>751 650</b>	Truck	
	MOTOSİKLET	<b>2 657 722</b>	Motorcycle	
	ÖZEL AMAÇLI TAŞITLAR	<b>33 071</b>	Special Purpose Vehicles	
	<b>TRAKTÖR</b>	<b>1 515 421</b>	Tractor	
	<b>TOPLAM</b>	<b>17 033 413</b>	<b>Total</b>	
YILLIK YENİ TAŞIT KAYDI	OTOMOBİL	<b>565 791</b>	Passenger Car	Vehicles Regis- tered for the First Time
	MINİBÜS	<b>13 915</b>	Minibus	
	OTOBÜS	<b>20 673</b>	Buses and Coaches	
	KAMYONET	<b>197 643</b>	Pickup	
	KAMYON	<b>38 616</b>	Truck	
	MOTOSİKLET	<b>179 226</b>	Motorcycle	
	ÖZEL AMAÇLI TAŞITLAR	<b>1 305</b>	Special Purpose Vehicles	
	<b>TRAKTÖR</b>	<b>52 123</b>	Tractor	
	<b>TOPLAM</b>	<b>1 069 292</b>	<b>Total</b>	
TAŞIT ÜRETİMİ **	OTOMOBİL	<b>857 369</b>	Passenger Car	Production of Vehicles
	MINİBÜS,MİDİBÜS ve OTOBÜS	<b>53 257</b>	Minibus and Coaches	
	KAMYONET	*	Pickup	
	KAMYON	<b>20 473</b>	Truck	
	<b>TOPLAM</b>	<b>931 099</b>	<b>Total</b>	
1000 KİŞİYE DÜŞEN OTOMOBİL ADEDİ		<b>114</b>	Number of Cars per 1000 Persons	
100 AİLEYE DÜŞEN OTOMOBİL ADEDİ		<b>46</b>	Number of Cars per 100 Family	
TOPLAM BENZİN TÜKETİMİ VE KARAYOLU TAŞITLARININ PAYI (TON)		<b>1 841 215</b> <b>98%</b>	Total Consumption of Petrol and Percentage Used in Road Vehicles (Tons)	
TOPLAM MOTORİN TÜKETİMİ VE KARAYOLU TAŞITLARININ PAYI (TON)		<b>15 244 685</b> <b>85%</b>	Total Consumption of Diesel and Percentage Used in Road Vehicles (Tons)	
TOPLAM LPG TÜKETİMİ VE KARAYOLU TAŞITLARININ PAYI (TON)		<b>3 686 001</b> <b>73%</b>	Total Consumption of LPG and Percentage Used in Road Vehicles (Tons)	

KAYNAKLAR : TÜİK-ENERJİ VE TABİİ KAYNAKLAR BAKANLIĞI

RESOURCES : TURKSTAT-MINISTRY OF ENERGY AND NATURAL RESOURCES

NOT : Veriler 2012 yıl sonu değerleridir.

P.S : All figures are given as the end of 2012.

\* Bilgi elde edilememiştir.

\* Not available.

\*\* 2012 yılı bilgileri geçicidir.

\*\* Data of 2012 are provisional.

T.C. ULAŞTIRMA DENİZCİLİK VE HABERLEŞME BAKANLIĞI KARAYOLLARI GENEL MÜDÜRLÜĞÜ TRAFİK GÜVENLİK DAİRE BAŞKANLIĞI ULAŞIM ETÜTLERİ ŞUBESİ MÜDÜRLÜĞÜ	REPUBLIC OF TURKEY MINISTRY OF TRANSPORT MARITIME AFFAIRS AND COMMUNICATIONS GENERAL DIRECTORATE OF HIGHWAYS DEPARTMENT OF TRAFFIC SAFETY DIVISION OF TRANSPORTATION STUDIES
---	--

**UE02 - YILLARA GÖRE KARAYOLU AĞI**  
Road Network By Years

YIL Year	YOL UZUNLUKLARI (KM) Number of Kilometres				
	DEVLET YOLLARI State Roads	İL YOLLARI Provincial Roads	TOPLAM Subtotal	OTOYOLLAR Motorways	GENEL TOPLAM Total
1923	18 335	-	18 335	-	18 335
1930	29 636	-	29 636	-	29 636
1935	39 583	-	39 583	-	39 583
1940	41 582	-	41 582	-	41 582
1945	43 511	-	43 511	-	43 511
1950	24 306	22 774	47 080	-	47 080
1955	24 553	30 455	55 008	-	55 008
1960	26 711	34 831	61 542	-	61 542
1965	34 502	24 290	58 792	-	58 792
1970	35 016	24 437	59 453	-	59 453
1975	33 762	25 307	59 069	24	59 093
1980	31 976	28 785	60 761	24	60 785
1985	30 997	28 305	59 302	77	59 379
1990	31 149	27 979	59 128	241	59 369
1995	31 422	28 577	59 999	1 243	61 242
1996	31 412	28 813	60 225	1 411	61 636
1997	31 320	29 521	60 841	1 470	62 311
1998	31 345	29 540	60 885	1 628	62 513
1999	31 388	29 535	60 923	1 639	62 562
2000	31 397	29 693	61 090	1 674	62 764
2001	31 376	29 929	61 305	1 696	63 001
2002	31 318	30 050	61 368	1 714	63 082
2003	31 358	30 133	61 491	1 753	63 244
2004	31 446	30 368	61 814	1 662	63 476
2005	31 371	30 568	61 939	1 667	63 606
2006	31 335	30 429	61 764	1 908	63 672
2007	31 333	30 579	61 912	1 908	63 820
2008	31 311	30 712	62 023	1 922	63 945
2009	31 271	30 948	62 219	2 036	64 255
2010	31 395	31 390	62 785	2 080	64 865
2011	31 372	31 558	62 930	2 119	65 049
2012	31 375	31 880	63 255	2 127	65 382

Not: Yukarıda verilen veriler yıl sonu itibarıyledir.  
Note: Values are given by the end of year.

**UE03 - YILLARA GÖRE KARAYOLU AĞININ SATIŞ CİNSLERİNE GÖRE DAĞILIMI**  
Surface Types of Road Network By Years

YIL Year	YOL UZUNLUKLARI (KM)			Number of Kilometres				
	DEVLET YOLLARI VE İL YOLLARI			State Roads and Provincial Roads				
	KAPLAMALI YOLLAR Asphalt Roads			PARKE YOLLAR Stone Block Roads	STABİLİZE, KIRMA TAŞ YOLLAR Stabilized and Crush Stone Roads	TOPRAK YOLLAR Earth Roads	GEÇİT VERMEYEN YOLLAR Primitive Roads	TOPLAM UZUNLUK Total Length
	ASFALT BETON Asphaltic Concrete	SATHİ KAPLAMA Surface Treatment	TOPLAM Total					
1923			-	-	13885	2450	2000	18 335
1930			-	-	13696	8819	7121	29 636
1935			26*	-	16337	13448	9772	39 557
1940			352*	-	17879	13171	10180	41 230
1945			805*	-	19236	13385	10085	42 706
1950	336	1 111	1 447	177	22 590	10 311	12 555	47 080
1955	218	2 497	2 715	189	28 975	8 956	14 173	55 008
1960	216	6 677	6 893	156	34 990	9 168	10 335	61 542
1965	1 007	10 852	11 859	200	30 528	7 318	8 887	58 792
1970	1 534	17 481	19 015	211	28 899	8 517	2 811	59 453
1975	1 892	23 409	25 301	205	26 033	5 879	1 651	59 069
1980	2 822	32 848	35 670	140	18 508	4 605	1 838	60 761
1985	3 368	38 784	42 152	125	13 019	2 440	1 566	59 302
1990	4 261	43 200	47 461	136	8 803	1 356	1 372	59 128
1995	4 835	45 849	50 684	121	6 552	1 330	1 312	59 999
1996	5 080	46 634	51 714	105	6 007	1 176	1 223	60 225
1997	5 136	47 684	52 820	107	5 574	1 201	1 139	60 841
1998	5 659	48 650	54 309	116	4 141	1 180	1 139	60 885
1999	5 752	49 054	54 806	132	3 761	1 195	1 029	60 923
2000	6 057	49 709	55 766	134	3 026	1 144	1 020	61 090
2001	6 452	50 028	56 480	139	2 615	1 113	958	61 305
2002	6 877	49 943	56 820	126	2 605	1 025	792	61 368
2003	6 930	50 218	57 148	132	2 441	1 018	752	61 491
2004	7 030	50 461	57 491	136	2 236	1 214	737	61 814
2005	7 080	50 302	57 382	133	2 207	1 329	888	61 939
2006	7 204	50 159	57 363	135	2 132	1 226	908	61 764
2007	7 406	50 619	58 025	158	1 796	947	986	61 912
2008	8 004	50 305	58 309	168	1 600	862	1 084	62 023
2009	8 681	49 782	58 463	180	1 490	783	1 303	62 219
2010	10 197	48 929	59 126	212	1 314	782	1 351	62 785
2011	11 561	47 912	59 473	212	1 077	721	1 447	62 930
2012	13 150	46 462	59 612	256	1 069	666	1 652	63 255

\* Asfalt Beton ve Sathi Kaplama ayırımına ilişkin veri yoktur.

\* Data are not available on asphaltic concrete and surface treatment roads.

Not: Yukarıda verilen veriler yıl sonu itibarıyla.

Note: Values are given by the end of year.

T.C. ULAŞTIRMA DENİZCİLİK VE HABERLEŞME BAKANLIĞI KARAYOLLARI GENEL MÜDÜRLÜĞÜ TRAFİK GÜVENLİĞİ DAİRESİ BAŞKANLIĞI ULAŞIM ETÜTLERİ ŞUBESİ MÜDÜRLÜĞÜ	REPUBLIC OF TURKEY MINISTRY OF TRANSPORT MARITIME AFFAIRS AND COMMUNICATIONS GENERAL DIRECTORATE OF HIGHWAYS DEPARTMENT OF TRAFFIC SAFETY DIVISION OF TRANSPORTATION STUDIES
--	--

UE04 -	OTOYOLLAR, DEVLET VE İL YOLLARI ÜZERİNDE SEYİR VE TAŞIMALAR Circulation and Transportation on Motorways, State and Provincial Roads	MİLYON Million
--------	--	-------------------

YIL Year	TAŞIT - KM Vehicle - Km				TON - KM Ton - Km				YOLCU - KM Passenger - Km			
	OTOYOL Motorway	DEVL. Y. State R.	İL YOLU Prov. R.	TOPLAM Total	OTOYOL Motorway	DEVL. Y. State R.	İL YOLU Prov. R.	TOPLAM Total	OTOYOL Motorway	DEVL. Y. State R.	İL YOLU Prov. R.	TOPLAM Total
1950		530	28	558		907	50	957		2 484	113	2 597
1955		1 092	112	1 204		2 187	219	2 406		9 846	985	10 831
1960		1 421	142	1 563		3 344	334	3 678		9 891	989	10 880
1965		3 202	192	3 394		7 939	476	8 415		23 520	1 411	24 931
1970		6 110	367	6 477		16 459	988	17 447		38 973	2 338	41 311
1975		12 672	760	13 432		27 759	1 665	29 424		64 524	3 871	68 395
1980		13 948	1 395	15 343		34 097	3 410	37 507		66 479	6 648	73 127
1985		16 970	1 697	18 667		41 485	4 149	45 634		83 242	8 324	91 566
1990		24 583	2 458	27 041		59 736	5 974	65 710		122 719	12 272	134 991
1991		23 687	2 369	26 056		56 335	5 634	61 969		119 117	11 912	131 029
1992		25 922	2 592	28 514		61 548	6 156	67 704		129 247	12 926	142 173
1993		28 006	2 801	30 807		88 948	8 895	97 843		132 754	13 275	146 029
1994		28 410	2 841	31 251		86 382	8 638	95 020		127 948	12 795	140 743
1995		31 666	3 167	34 833		102 286	10 229	112 515		141 093	14 109	155 202
1996	3 523	34 084	3 408	41 015	12 033	112 498	11 250	135 781	13 035	140 760	14 076	167 871
1997	4 454	37 251	4 679	46 384	15 449	114 215	10 125	139 789	17 988	148 042	14 937	180 967
1998	5 084	39 857	5 006	49 947	16 939	124 256	11 015	152 210	19 501	151 384	15 274	186 159
1999	4 992	39 867	5 007	49 866	16 562	123 467	10 945	150 974	18 163	142 677	14 396	175 236
2000	6 324	44 216	5 611	56 151	19 732	130 511	11 309	161 552	22 288	147 542	15 851	185 681
2001	5 448	41 918	5 265	52 631	17 209	123 283	10 929	151 421	18 700	135 808	13 703	168 211
2002	6 030	40 504	5 130	51 664	19 388	121 157	10 367	150 912	20 468	128 952	13 907	163 327
2003	6 713	40 505	5 131	52 349	20 331	121 467	10 365	152 163	22 456	127 995	13 860	164 311
2004	7 764	44 328	5 675	57 767	23 735	123 340	9 778	156 853	25 979	132 784	15 549	174 312
2005	9 466	45 818	5 845	61 129	28 504	128 343	9 984	166 831	31 606	134 681	15 865	182 152
2006	11 528	47 055	5 994	64 577	32 926	134 361	10 112	177 399	37 994	133 608	15 991	187 593
2007	12 727	50 459	6 423	69 609	34 452	136 967	9 911	181 330	43 873	147 694	17 548	209 115
2008	13 131	50 255	6 385	69 771	36 925	135 607	9 403	181 935	44 394	144 378	17 326	206 098
2009	13 908	51 932	6 592	72 432	40 515	127 211	8 729	176 455	47 481	147 253	17 730	212 464
2010	14 949	58 159	7 016	80 124	42 941	138 921	8 503	190 365	50 378	158 072	18 463	226 913
2011	15 707	62 276	7 512	85 495	46 893	147 631	8 548	203 072	54 635	167 851	19 779	242 265
2012	16 379	64 661	12 949	93 989	48 751	151 722	15 650	216 123	56 923	172 226	29 725	258 874

**UE05 - OTOYOLLAR, DEVLET VE İL YOLLARI ÜZERİNDE TAŞIT VE YOLCU SEYİRLERİ**  
Circulation of Vehicles and Passengers on Motorways, State and Provincial Roads

**MİLYON**  
Million

YIL Year	TAŞIT - KM Vehicle - Km				YOLCU - KM Passenger - Km			
	Otombl - Km Pas. Car - Km	Otobüs - Km Bus - Km	Kamyon - Km Truck - Km	TAŞIT - KM Vehicle - Km	Otm. Yl - Km Pas.Car Pa - Km	Otb. Yl - Km Bus Pa - Km	Kmy. Yl - Km Trk. Pa - Km	YOLCU - KM Passen - Km
<b>1950</b>								
D	172	80	278	<b>530</b>	401	1 627	456	<b>2 484</b>
İ	13	4	11	<b>28</b>	18	74	21	<b>113</b>
T	185	84	289	<b>558</b>	419	1 701	477	<b>2 597</b>
<b>1960</b>								
D	462	215	744	<b>1 421</b>	1 595	6 480	1 816	<b>9 891</b>
İ	46	22	74	<b>142</b>	160	648	181	<b>989</b>
T	508	237	818	<b>1 563</b>	1 755	7 128	1 997	<b>10 880</b>
<b>1970</b>								
D	2 511	775	2 824	<b>6 110</b>	12 194	21 983	4 796	<b>38 973</b>
İ	150	47	170	<b>367</b>	731	1 319	288	<b>2 338</b>
T	2 661	822	2 994	<b>6 477</b>	12 925	23 302	5 084	<b>41 311</b>
<b>1980</b>								
D	7 023	1 032	5 893	<b>13 948</b>	28 790	30 149	7 540	<b>66 479</b>
İ	702	103	590	<b>1 395</b>	2 879	3 015	754	<b>6 648</b>
T	7 725	1 135	6 483	<b>15 343</b>	31 669	33 164	8 294	<b>73 127</b>
<b>1990</b>								
D	12 482	2 145	9 956	<b>24 583</b>	31 204	76 580	14 935	<b>122 719</b>
İ	1 248	214	996	<b>2 458</b>	3 121	7 658	1 493	<b>12 272</b>
T	13 730	2 359	10 952	<b>27 041</b>	34 325	84 238	16 428	<b>134 991</b>
<b>2000</b>								
O	3 930	407	1 987	<b>6 324</b>	9 826	11 600	862	<b>22 288</b>
D	28 090	2 493	13 633	<b>44 216</b>	70 228	71 056	6 258	<b>147 542</b>
İ	4 204	166	1 241	<b>5 611</b>	10 506	4 735	610	<b>15 851</b>
T	36 224	3 066	16 861	<b>56 151</b>	90 560	87 391	7 730	<b>185 681</b>
<b>2005</b>								
O	6 029	584	2 853	<b>9 466</b>	15 074	16 532	862	<b>31 606</b>
D	29 967	2 642	13 209	<b>45 818</b>	74 918	59 763	6 258	<b>134 681</b>
İ	4 494	215	1 136	<b>5 845</b>	11 235	4 630	610	<b>15 865</b>
T	40 490	3 441	17 198	<b>61 129</b>	101 227	80 925	7 730	<b>182 152</b>
<b>2006</b>								
O	7 559	675	3 294	<b>11 528</b>	18 898	19 097	862	<b>37 994</b>
D	30 982	2 508	13 565	<b>47 055</b>	77 455	56 154	6 258	<b>133 608</b>
İ	4 647	205	1 142	<b>5 994</b>	11 618	4 373	610	<b>15 991</b>
T	43 188	3 388	18 001	<b>64 577</b>	107 970	79 624	7 730	<b>187 593</b>
<b>2007</b>								
O	8 529	714	3 484	<b>12 727</b>	21 317	22 556	862	<b>43 873</b>
D	33 561	2 574	14 324	<b>50 459</b>	83 904	63 790	6 258	<b>147 694</b>
İ	5 034	211	1 178	<b>6 423</b>	12 588	4 960	610	<b>17 548</b>
T	47 124	3 499	18 986	<b>69 609</b>	117 809	91 306	7 730	<b>209 115</b>
<b>2008</b>								
O	8 795	737	3 599	<b>13 131</b>	21 988	22 407	862	<b>44 395</b>
D	33 658	2 506	14 091	<b>50 254</b>	84 146	60 231	6 258	<b>144 377</b>
İ	5 049	206	1 131	<b>6 386</b>	12 622	4 704	610	<b>17 326</b>
T	47 502	3 449	18 821	<b>69 771</b>	118 756	87 342	7 730	<b>206 098</b>
<b>2009</b>								
O	9 347	775	3 785	<b>13 907</b>	23 368	24 114	862	<b>47 482</b>
D	35 016	2 563	14 353	<b>51 932</b>	87 540	59 713	6 258	<b>147 253</b>
İ	5 252	210	1 130	<b>6 592</b>	13 130	4 599	610	<b>17 729</b>
T	49 615	3 549	19 268	<b>72 431</b>	124 038	88 426	7 730	<b>212 464</b>
<b>2010</b>								
O	9 948	850	4 151	<b>14 949</b>	24 871	25 507	862	<b>50 378</b>
D	39 548	2 677	15 934	<b>58 159</b>	98 848	59 224	6 258	<b>158 072</b>
İ	5 620	213	1 183	<b>7 016</b>	14 138	4 325	610	<b>18 463</b>
T	55 116	3 740	21 268	<b>80 124</b>	137 857	89 056	7 730	<b>226 913</b>
<b>2011</b>								
O	10 161	943	4 603	<b>15 707</b>	25 403	29 232	862	<b>54 635</b>
D	42 510	2 726	17 041	<b>62 276</b>	106 275	61 576	6 258	<b>167 851</b>
İ	6 068	219	1 225	<b>7 512</b>	15 253	4 526	610	<b>19 779</b>
T	58 739	3 888	22 869	<b>85 495</b>	146 931	95 334	7 730	<b>242 265</b>
<b>2012</b>								
O	10 613	980	4 786	<b>16 379</b>	26 533	30 390	862	<b>56 922</b>
D	44 662	2 693	17 306	<b>64 661</b>	111 655	60 571	6 258	<b>172 226</b>
İ	9 651	436	2 862	<b>12 949</b>	24 128	5 598	610	<b>29 725</b>
T	64 926	4 110	24 953	<b>93 989</b>	162 315	96 559	7 730	<b>258 874</b>

O : OTOYOL Motorways  
D : DEVLET YOLU State Roads  
İ : İL YOLU Provincial Roads  
T : TOPLAM Total

UE06 - AĞIRLIKLI ORTALAMA GÜNLÜK TRAFİK  
Weighted Average Daily Traffic

AOGT  
WADT

YIL Year	DEVLET YOLLARI State Roads				İL YOLLARI Provincial Roads			
	OTOMOBİL Pas . Car	OTOBÜS Bus	KAMYON Truck	TOPLAM Total	OTOMOBİL Pas . Car	OTOBÜS Bus	KAMYON Truck	TOPLAM Total
1950	19	9	31	59	2	1	2	5
%	32	15	53	100	40	20	40	100
1955	40	20	62	122	4	2	6	12
%	33	16	51	100	33	17	50	100
1960	47	22	76	145	4	2	6	12
%	32	15	52	100	33	17	50	100
1965	99	34	121	254	10	3	12	25
%	39	13	48	100	40	12	48	100
1970	196	61	221	478	17	5	19	41
%	41	13	46	100	41	12	46	100
1975	559	84	386	1 029	45	7	31	83
%	54	8	38	100	54	8	37	100
1980	602	88	505	1 195	67	10	56	133
%	50	7	42	100	50	8	42	100
1985	602	154	745	1 501	66	17	82	165
%	40	10	50	100	40	10	50	100
1990	1 105	195	873	2 173				
%	51	9	40	100				
1995	1 685	206	899	2 790				
%	60	7	32	100				
2000	2 482	220	1 192	3 894				
%	64	6	31	100				
2001	2 363	211	1 132	3 706				
%	64	6	31	100				
2002	2 266	206	1 109	3 581				
%	63	6	31	100				
2003	2 273	204	1 113	3 590	352	14	104	470
%	63	6	31	100	75	3	22	100
2004	2 565	233	1 109	3 907				
%	66	6	28	100				
2005	2 636	233	1 163	4 032				
%	65	6	29	100				
2006	2 730	221	1 196	4 147				
%	66	5	29	100				
2007	2 953	227	1 262	4 442				
%	66	5	28	100				
2008	2 958	220	1 238	4 416				
%	67	5	28	100				
2009	3 080	225	1 263	4 568				
%	67	5	28	100				
2010	3 309	230	1 378	4 917				
%	67	5	28	100				
2011	3 704	237	1 485	5 426				
%	68	4	27	100				
2012	3 900	235	1 511	5 647	1.224	55	363	1.642
%	69	4	27	100	75	3	22	100



T.C. ULAŞTIRMA DENİZCİLİK VE HABERLEŞME BAKANLIĞI KARAYOLLARI GENEL MÜDÜRLÜĞÜ TRAFİK GÜVENLİĞİ DAİRESİ BAŞKANLIĞI ULAŞIM ETÜTLERİ ŞUBESİ MÜDÜRLÜĞÜ	REPUBLIC OF TURKEY MINISTRY OF TRANSPORT MARITIME AFFAIRS AND COMMUNICATIONS GENERAL DIRECTORATE OF HIGHWAYS DEPARTMENT OF TRAFFIC SAFETY DIVISION OF TRANSPORTATION STUDIES
--	--

UE07 -	ULAŞIM YOLLARINA GÖRE YÜK VE YOLCU TAŞIMASI Transportation Of Freight And Passenger According To Transportation Type	MİLYON Million
--------	---	-------------------

YIL Year	KARAYOLLARI Highways		DENİZYOLLARI Sea Routes		DEMİRYOLLARI Railways		HAVAYOLLARI Airlines	
	Ton-Km Tonne-Km	Yolcu-Km Passenger-Km	Ton-Km Tonne-Km	Yolcu-Km Passenger-Km	Ton-Km Tonne-Km	Yolcu-Km Passenger-Km	Ton-Km Tonne-Km	Yolcu-Km Passenger-Km
1960	3.678	10.880	...	...		3.633	12	15
%	-	-	-	-	-	-	-	-
1970	17.447	41.311	...	...	6.092	3.444	25	308
%	-	-	-	-	-	-	-	-
1980	37.507	73.127	...	...	5.029	6.011	32	395
%	-	-	-	-	-	-	-	-
1990	65.710	134.991	...	...	8.031	6.410	107	1.208
%	-	-	-	-	-	-	-	-
2000	161.552	185.681	9.895	5.833	9.895	5.899	310	3.555
%	88,9%	92,4%	5,4%	2,9%	5,4%	2,9%	0,2%	1,8%
2001	151.421	168.211	15.001	57	7.562	5.568	285	2.859
%	86,9%	95,2%	8,6%	0,0%	4,3%	3,2%	0,2%	1,6%
2002	150.912	163.327	10.627	39	7.224	5.204	275	2.706
%	89,3%	95,4%	6,3%	0,0%	4,3%	3,0%	0,2%	1,6%
2003	152.163	164.311	10.001	41	8.669	5.878	276	2.752
%	88,9%	95,0%	5,8%	0,0%	5,1%	3,4%	0,2%	1,6%
2004	156.853	174.312	7.277	1.150	9.417	5.237	321	3.223
%	90,2%	94,8%	4,2%	0,6%	5,4%	2,8%	0,2%	1,8%
2005	166.831	182.152	6.439	1.241	9.152	5.036	392	3.992
%	91,3%	94,7%	3,5%	0,6%	5,0%	2,6%	0,2%	2,1%
2006	177.399	187.593	7.084	1.393	9.676	5.277	...	...
%	-	-	-	-	-	-	-	-
2007	181.330	209.115	9.573	1.561	9.921	5.553	...	...
%	-	-	-	-	-	-	-	-
2008	181.935	206.098	11.114	1.570	10.739	5.097	785 <sup>(1)</sup>	8309 <sup>(1)</sup>
%	88,9%	93,2%	5,4%	0,7%	5,2%	2,3%	0,4%	3,8%
2009	176.455	212.464	11.397	1.643	10.326	5.374	1190 <sup>(1)</sup>	12771 <sup>(1)</sup>
%	88,5%	91,5%	5,7%	0,7%	5,2%	2,3%	0,6%	5,5%
2010	190.365	226.913	12.570	1.570	11.462	5.491	1472 <sup>(1)</sup>	15159 <sup>(1)</sup>
%	88,2%	91,1%	5,8%	0,6%	5,3%	2,2%	0,7%	6,1%
2011	203.072	242.265	15.959	1.570	11.677	5.882	1737 <sup>(1)</sup>	18.016
%	87,4%	90,5%	6,9%	0,6%	5,0%	2,2%	0,7%	6,7%
2012	216.123	258.874	15.768	1.417	11.670	4.598	1839 <sup>(1)</sup>	19.731
%	88,1%	91,0%	6,4%	0,5%	4,8%	1,6%	0,7%	6,9%

KAYNAK <sup>(1)</sup> :	ICAO (ULUSLARARASI SIVİL HAVACILIK ORGANİZASYONU)	International Civil Aviation Organization
- :	Uygulanamamıştır.	Not Applicable
... :	Bulunamamıştır.	Not Available

**UE08 - MOTORLU KARA TAŞITLARI**

Motor vehicles in Use

YIL	OTOMOBİL	MİNİBÜS	OTOBÜS	KAMYONET	KAMYON	MOTOSİKLET	Ö.A.T.	Y.İ.M.	TRAKTÖR	TOPLAM
Year	Passenger Car	Minibus	Bus	Small truck	Truck	Motorcy.	S.P.V.	R.W.M.	Tractor	Total
1950	13.405	–	3.755	–	15.404	3.464	–	–	–	36.028
1960	45.767	–	10.981	–	57.460	9.380	–	–	–	123.588
1970	137.771	20.916	15.980	52.152	70.730	60.994	5.070	6.195	–	369.808
1975	403.546	40.623	23.763	98.579	108.381	91.421	8.450	11.157	–	785.920
1980	742.252	64.707	32.783	165.821	164.893	137.931	11.777	24.090	352.427	1.696.681
1985	983.444	87.951	47.119	212.505	205.496	289.052	17.639	45.561	502.590	2.391.357
1990	1.649.879	125.399	63.700	263.407	257.353	531.941	26.519	63.024	769.456	3.750.678
1995	3.058.511	173.051	90.197	397.743	321.421	819.922	37.272	87.214	937.528	5.922.859
2000	4.422.180	235.885	118.454	794.459	394.283	1.011.284	55.677	129.157	1.159.070	8.320.449
2001	4.534.803	239.381	119.306	833.175	396.493	1.031.221	57.490	131.019	1.179.068	8.521.956
2002	4.600.140	241.700	120.097	875.381	399.025	1.046.907	58.790	133.003	1.180.127	8.655.170
2003	4.700.343	245.394	123.500	973.457	405.034	1.073.415	60.511	137.933	1.184.256	8.903.843
2004	5.400.440	318.954	152.712	1.259.867	647.420	1.218.677	28.004	–	1.210.283	10.236.357
2005	5.772.745	338.539	163.390	1.475.057	676.929	1.441.066	30.333	–	1.247.767	11.145.826
2006	6.140.992	357.523	175.949	1.695.624	709.535	1.822.831	34.260	–	1.290.679	12.227.393
2007	6.472.156	372.601	189.128	1.890.459	729.202	2.003.492	38.573	–	1.327.334	13.022.945
2008	6.796.629	383.548	199.934	2.066.007	744.217	2.181.383	35.100	–	1.358.577	13.765.395
2009	7.093.964	384.053	201.033	2.204.951	727.302	2.303.261	34.104	–	1.368.032	14.316.700
2010	7.544.871	386.973	208.510	2.399.038	726.359	2.389.488	35.492	–	1.404.872	15.095.603
2011	8.113.111	389.435	219.906	2.611.104	728.458	2.527.190	34.116	–	1.466.208	16.089.528
2012	8.648.875	396.119	235.949	2.794.606	751.650	2.657.722	33.071	–	1.515.421	17.033.413

KAYNAK : TÜİK

Ö.A.T. : ÖZEL AMAÇLI TAŞITLAR

Y.İ.M. : YOL VE İŞ MAKİNALARI

SOURCE : TURKSTAT

S.P.V. : SPECIAL PURPOSE VEHICLES

R.W.M. : ROAD & WORK MACHINERY

UE09 - ULAŞIMLA İLGİLİ BAZI SOSYO-EKONOMİK VERİLER  
Some Socio-economic Values Related with Transportation

YIL Year	YIL ORTASI NÜFUS <sup>(1)</sup> (BİN) MID-YEAR POPULATION (THOUSAND)	TOPLAM MOTORLU KARA TAŞITLARI SAYISI TOTAL MOTOR VEHICLES	TAŞIT-KM (MİLYON) VEHICLE-KM (MILLION)	KİŞİ BAŞINA GAYRİ SAFİ YURTIÇİ HASILA (GROSS DOMESTIC PRODUCT PER CAPITA)		
				CARİ FİYATLARLA TL. WITH CURRENT PRICES TL	CARİ FİYATLARLA (USD)\$ WITH CURRENT PRICES \$	SABİT(1998) FİYATLARLA TL. WITH CONSTANT PRICES (1998) TL.
1950	20.807	36.028	558			
1960	27.506	123.588	1.563			
1970	35.321	369.798	6.477			
1975	40.026	785.920	13.432			
1980	44.439	1.696.681	15.343			
1985	50.307	2.391.357	18.667			
1990	55.120	3.750.678	27.041			
1991	56.055	4.101.975	26.056			
1992	56.986	4.584.717	28.514			
1993	57.913	5.250.622	30.807			
1994	58.837	5.606.712	31.251			
1995	59.756	5.922.859	34.833			
1996	60.671	6.305.707	41.015			
1997	61.582	6.863.462	46.384			
1998	62.464	7.371.541	49.947	1.124	4.338	1.124
1999	63.364	7.758.511	49.866	1.651	3.907	1.071
2000	64.252	8.320.449	56.151	2.594	4.130	1.127
2001	65.133	8.521.956	52.631	3.688	3.020	1.049
2002	66.008	8.655.170	51.664	5.310	3.492	1.099
2003	66.873	8.903.843	52.349	6.801	4.559	1.142
2004	67.723	10.236.357	57.767	8.255	5.764	1.233
2005	68.566	11.145.826	61.129	9.464	7.022	1.320
2006	69.395	12.227.393	64.577	10.929	7.586	1.394
2007	70.215	13.022.945	69.609	12.009	9.240	1.442
2008	71.095	13.765.395	69.771	13.370	10.438	1.434
2009	72.050	14.316.700	72.432	13.221	8.559	1.346
2010	73.003	15.095.603	80.124	15.051	10.022	1.450
2011	73.950	16.089.528	85.495	17.549	10.466	1.557
2012	74.855	17.033.413	93.989	18.914	10.497	1.572

TÜİK TARAFINDAN GÜNCELLEME  
YAPILMAMIŞTIR

<sup>(1)</sup> : Yıl Ortası Nüfus Tahminleri

<sup>(1)</sup> : Mid-year population estimations

KAYNAK : TÜİK

SOURCE : TURKSTAT

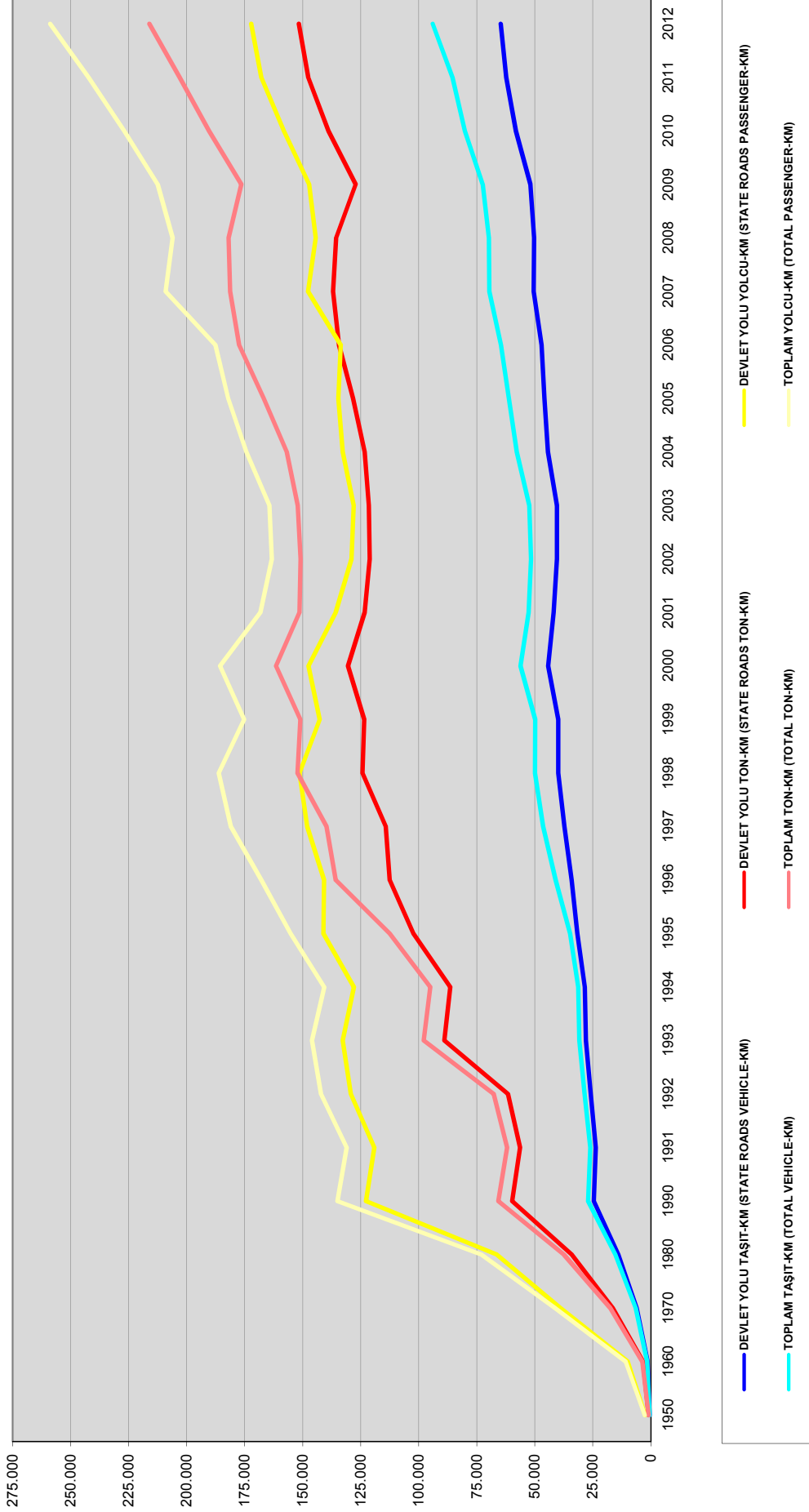
<b>UE10 -</b>	<b>ENERJİ TÜKETİMİ</b> Energy Consumption	<b>BİN TON PETROL EŞDEĞERİ (TEP)</b> Thousand ton petroleum equivalent
---------------	--	---

YIL	TOPLAM ENERJİ ÜRETİMİ	TOPLAM ENERJİ TÜKETİMİ	ULAŞTIRMA SEKTÖRÜNDE ENERJİ TÜKETİMİ	KARAYOLLARINDA ENERJİ TÜKETİMİ
Year	Total Energy Production	Total Energy Consumption	Energy Consumption in Transportation Sector	Energy Consumption on Highways
1970	14 516	18 871	3 208	-
1975	16 473	27 437	5 148	-
1980	17 358	31 973	5 230	-
1985	21 935	39 399	6 195	-
1990	25 478	52 987	8 723	8 015
1991	25 501	54 278	8 304	7 537
1992	26 794	56 684	8 545	7 734
1993	26 441	60 265	10 419	9 451
1994	26 511	59 127	9 907	8 891
1995	26 719	63 678	11 066	9 652
1996	27 386	69 862	11 778	10 261
1997	28 209	73 779	11 339	9 760
1998	29 324	74 709	10 760	9 156
1999	27 659	74 275	11 351	9 919
2000	26 047	80 500	12 008	10 508
2001	24 576	75 402	12 000	10 383
2002	24 282	78 331	11 405	10 475
2003	23 783	83 826	12 395	10 950
2004	24 332	87 818	13 907	11 514
2005	24 549	91 074	13 849	11 785
2006	26 580	99 642	14 994	12 604
2007	27 453	107 625	17 282	14 368
2008	29 209	106 421	15 996	13 404
2009	30 328	106 138	15 916	13 309
2010	32 487	109 260	15 165	13 258
2011	32 229	114 480	15 950	13 757
2012	34 468	120 984	20 284	18 561

KAYNAK : ENERJİ VE TABİİ KAYNAKLAR BAKANLIĞI

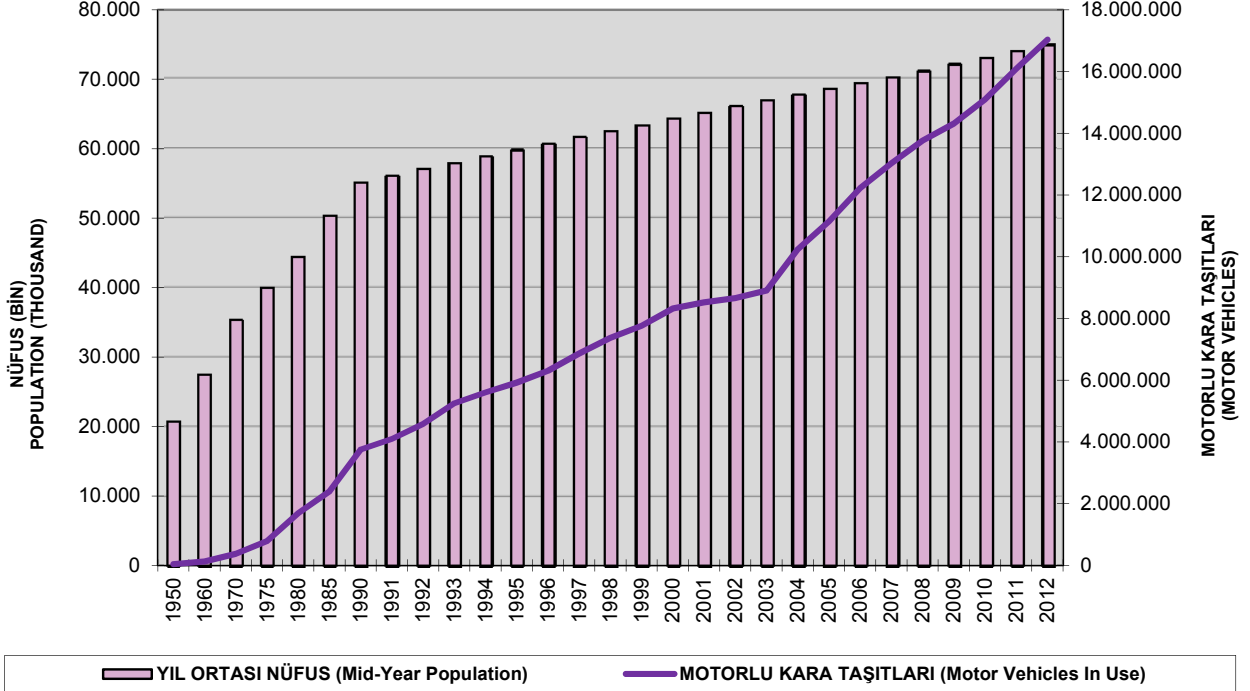
RESOURCE : MINISTRY OF ENERGY AND NATURAL RESOURCES

**KARAYOLLARI ÜZERİNDE SEYİR VE TAŞIMALAR (MİLYON)**  
**Circulation and Transportation on Roads (Million)**

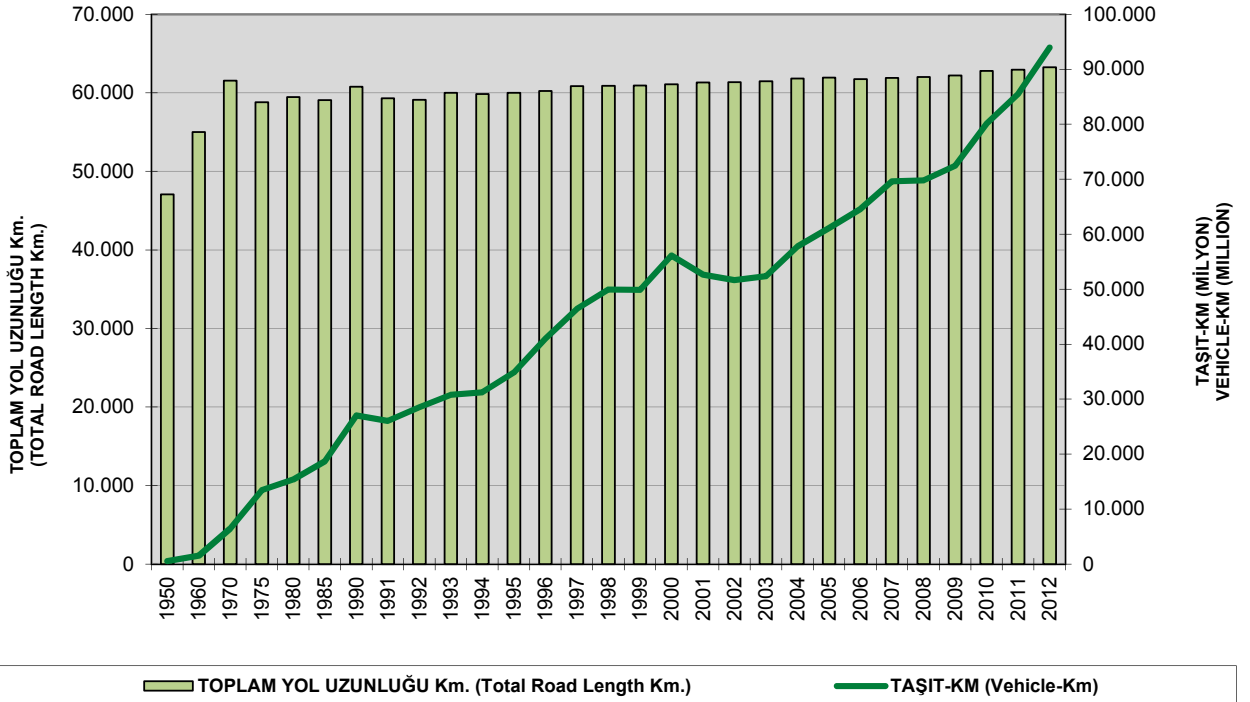




**NÜFUS VE MOTORLU KARA TAŞITLARI KARŞILAŞTIRMASI**  
Comparison of Population and Number of Motor Vehicles In Use



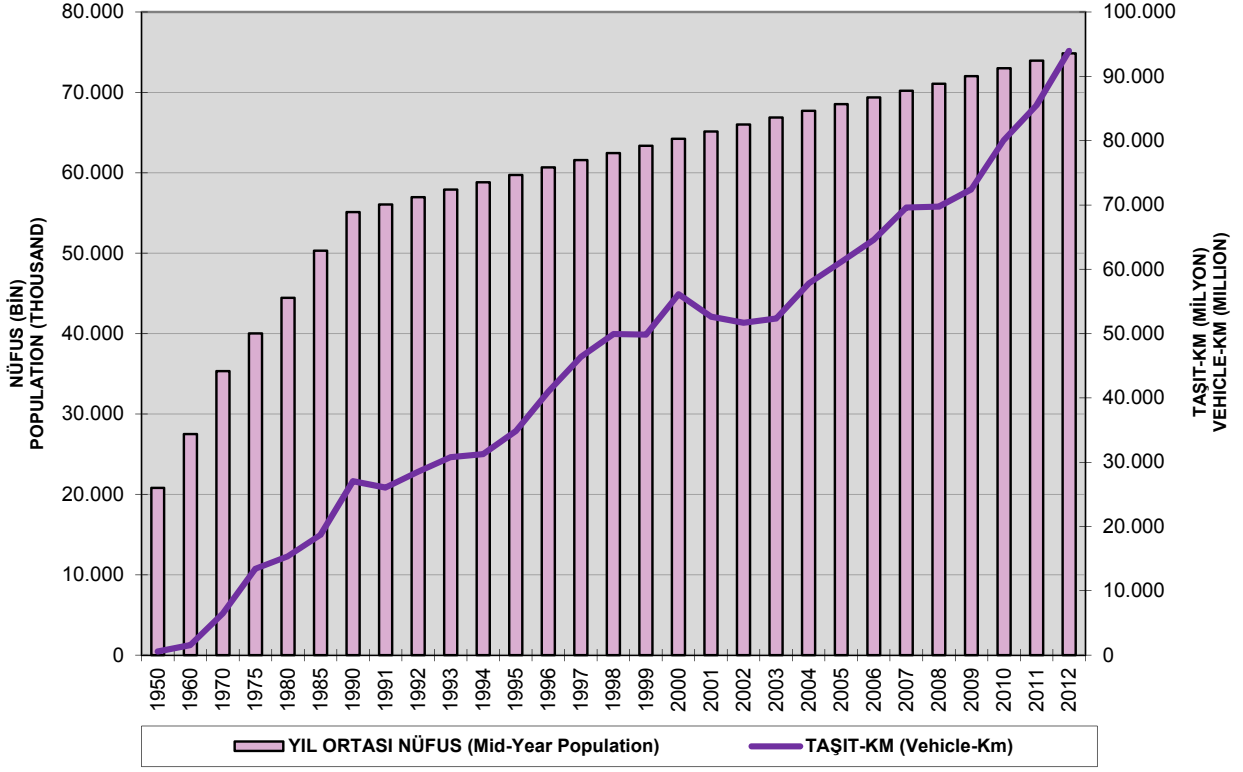
**TAŞIT-KM VE TOPLAM YOL UZUNLUĞU KARŞILAŞTIRMASI**  
Comparison of Vehicle-Km and Total Road Length



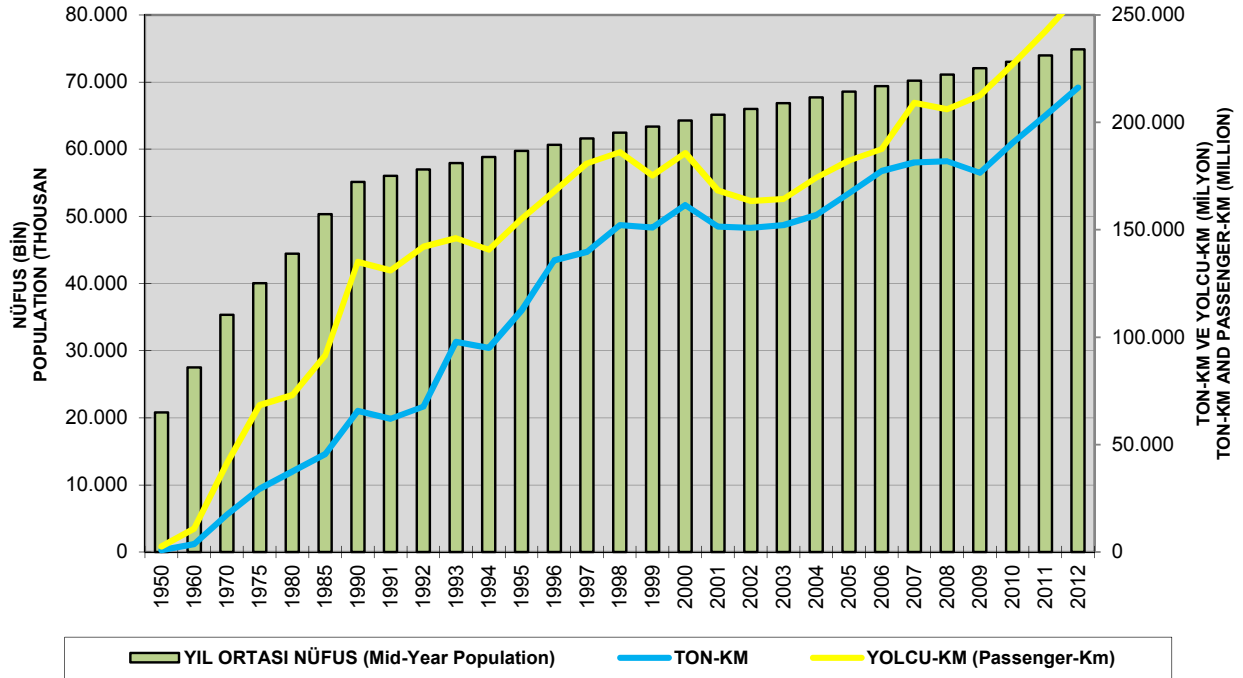




### NÜFUS VE TAŞIT-KM KARŞILAŞTIRMASI Comparison of Population and Vehicle-Km's



### NÜFUS, TON-KM VE YOLCU-KM KARŞILAŞTIRMASI Comparison of Population, Ton-Km's and Passenger-Km's

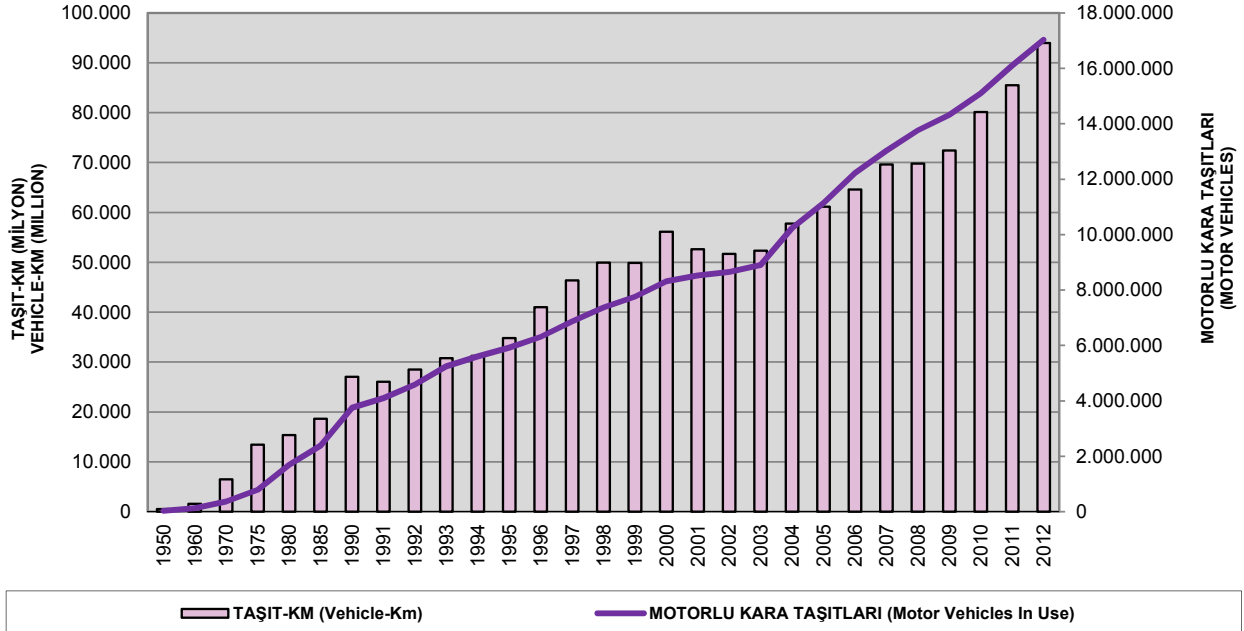


\* Taşıt-Km, Ton-Km, Yolcu-Km değerleri Karayolları Genel Müdürlüğü sorumluluğu altındaki yol ağına ait verilerdir.

\* Vehicle-Km, Ton-Km, Passenger-Km values include the roads under the responsibility of General Directorate Of Highways.



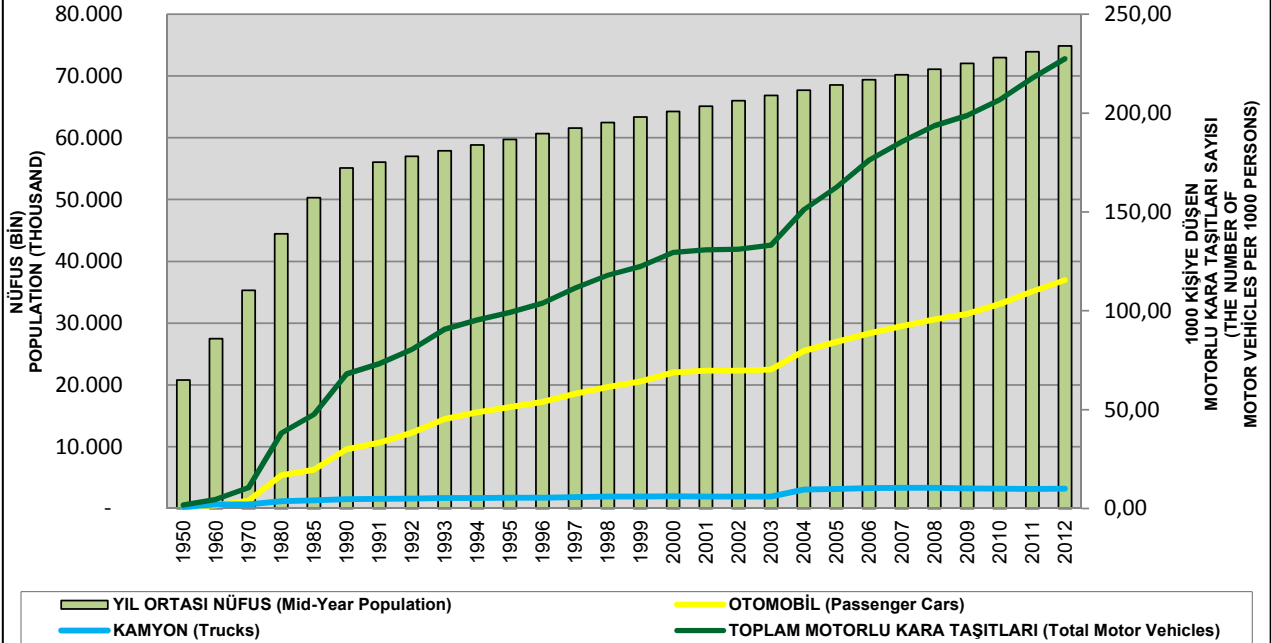
**TAŞIT-KM VE MOTORLU KARA TAŞITLARI KARŞILAŞTIRMASI**  
Comparison of Vehicle-Km's and Number of Motor Vehicles In Use



TAŞIT-KM (Vehicle-Km)

MOTORLU KARA TAŞITLARI (Motor Vehicles In Use)

**NÜFUS VE 1000 KİŞİYE DÜŞEN MOTORLU KARA TAŞITLARI KARŞILAŞTIRMASI**  
Comparison Of Population and Motor Vehicles Per 1000 Persons



YIL ORTASI NÜFUS (Mid-Year Population)

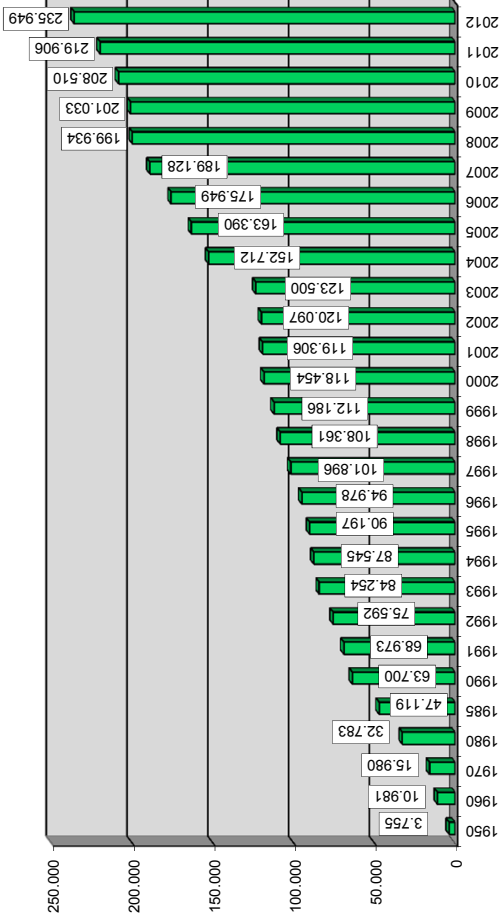
OTOMOBİL (Passenger Cars)

KAMYON (Trucks)

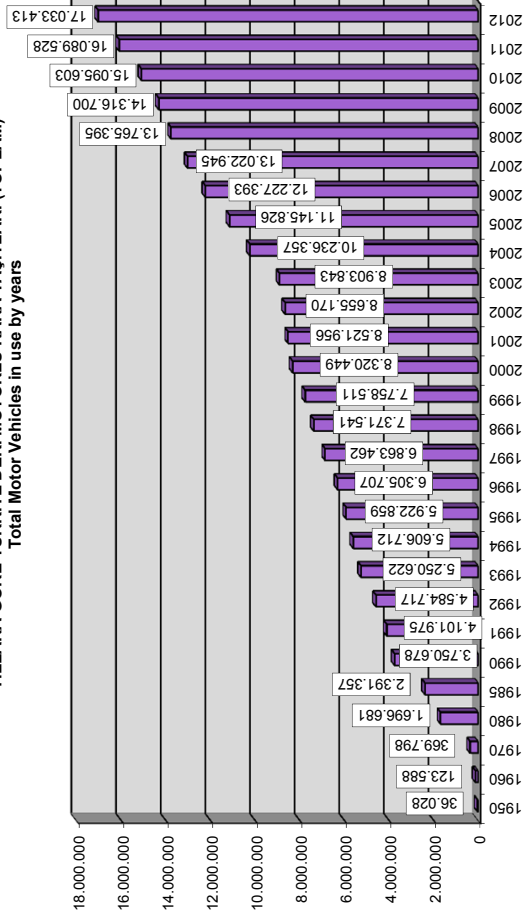
TOPLAM MOTORLU KARA TAŞITLARI (Total Motor Vehicles)



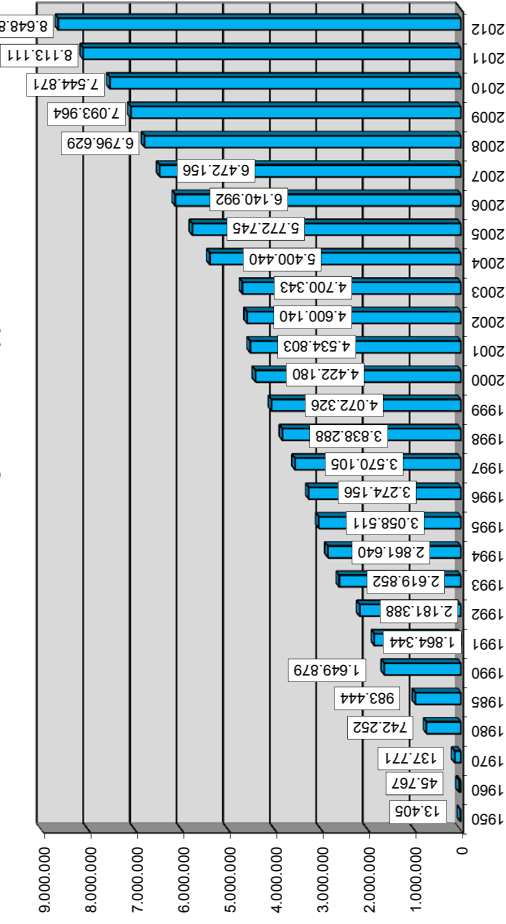
**YILLARA GÖRE TÜRKİYE'DEKİ MOTORLU KARA TAŞITLARI (OTOBÜS)**  
Buses in use by years



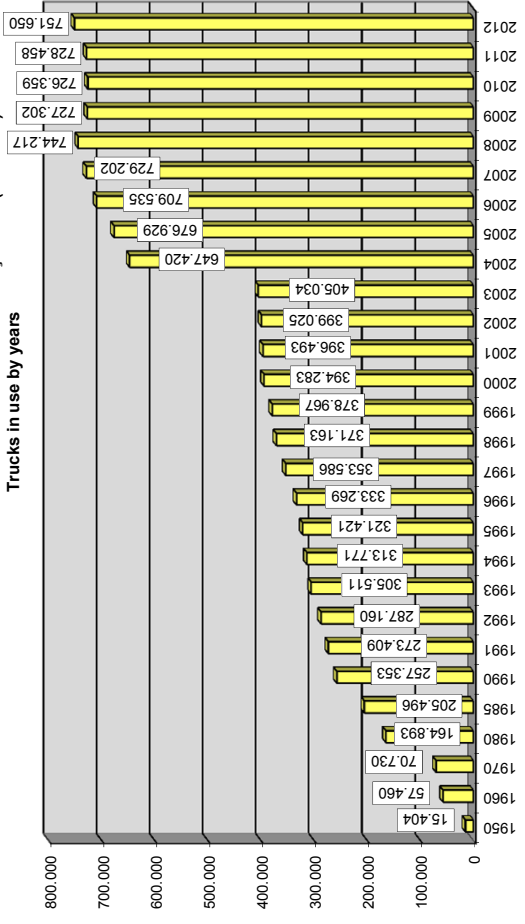
**YILLARA GÖRE TÜRKİYE'DEKİ MOTORLU KARA TAŞITLARI (TOPLAM)**  
Total Motor Vehicles in use by years



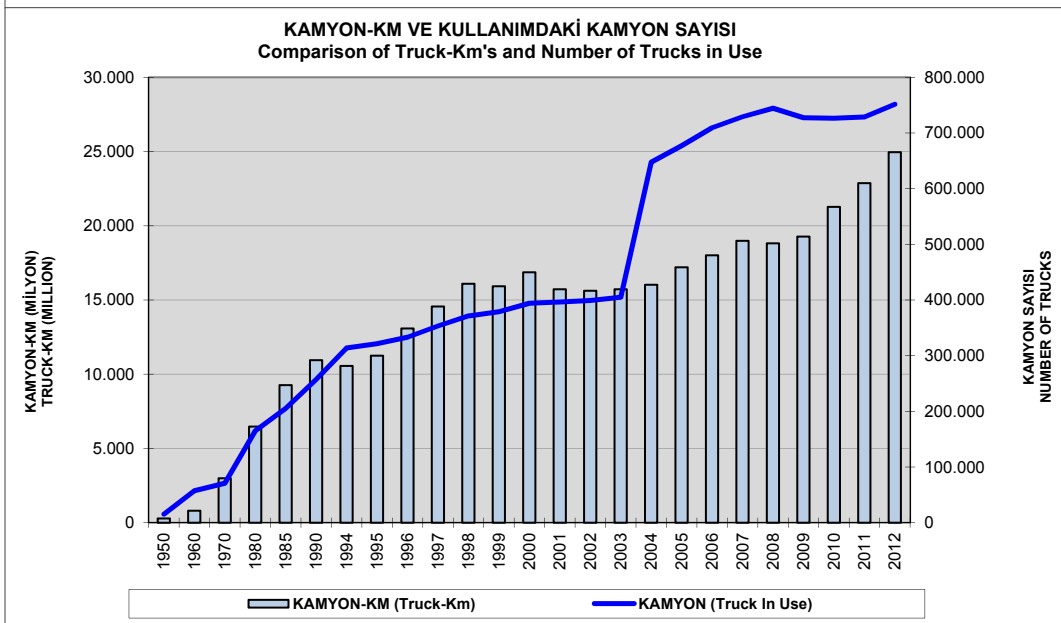
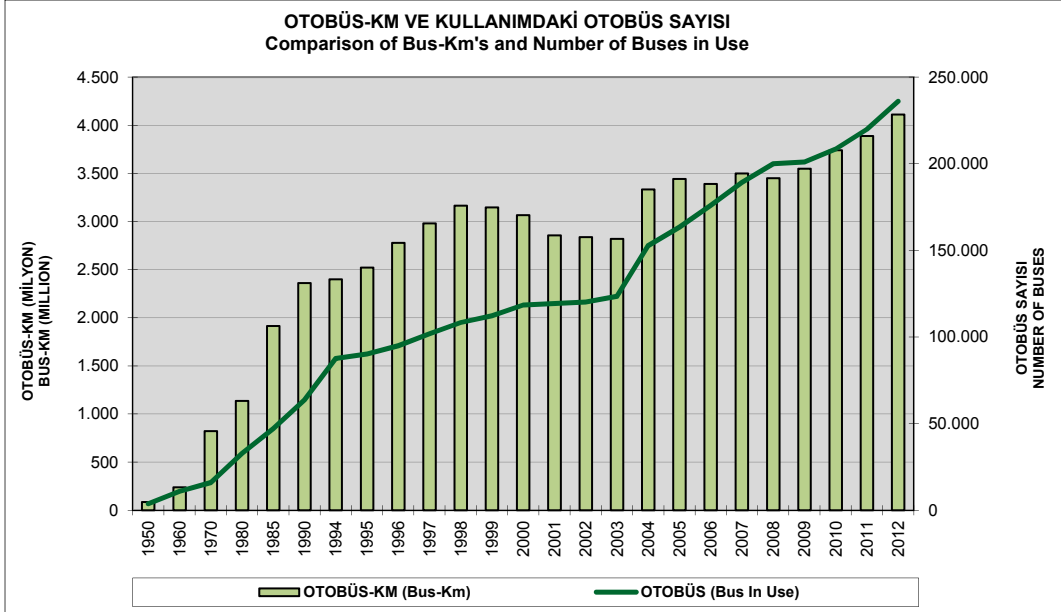
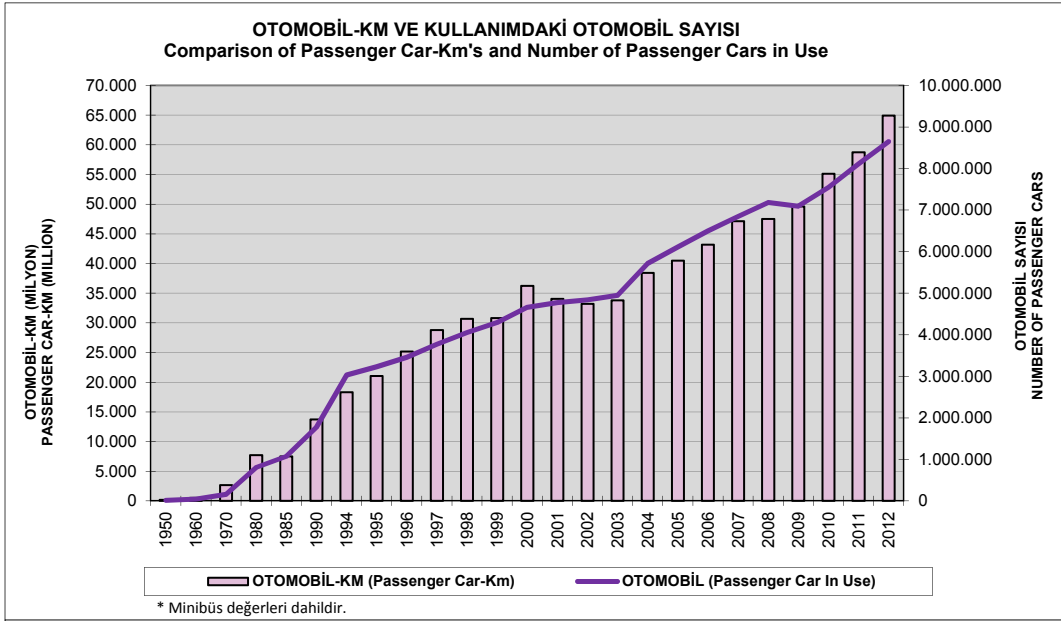
**YILLARA GÖRE TÜRKİYE'DEKİ MOTORLU KARA TAŞITLARI (OTOMOBİL)**  
Passenger cars in use by years



**YILLARA GÖRE TÜRKİYE'DEKİ MOTORLU KARA TAŞITLARI (KAMYON)**  
Trucks in use by years



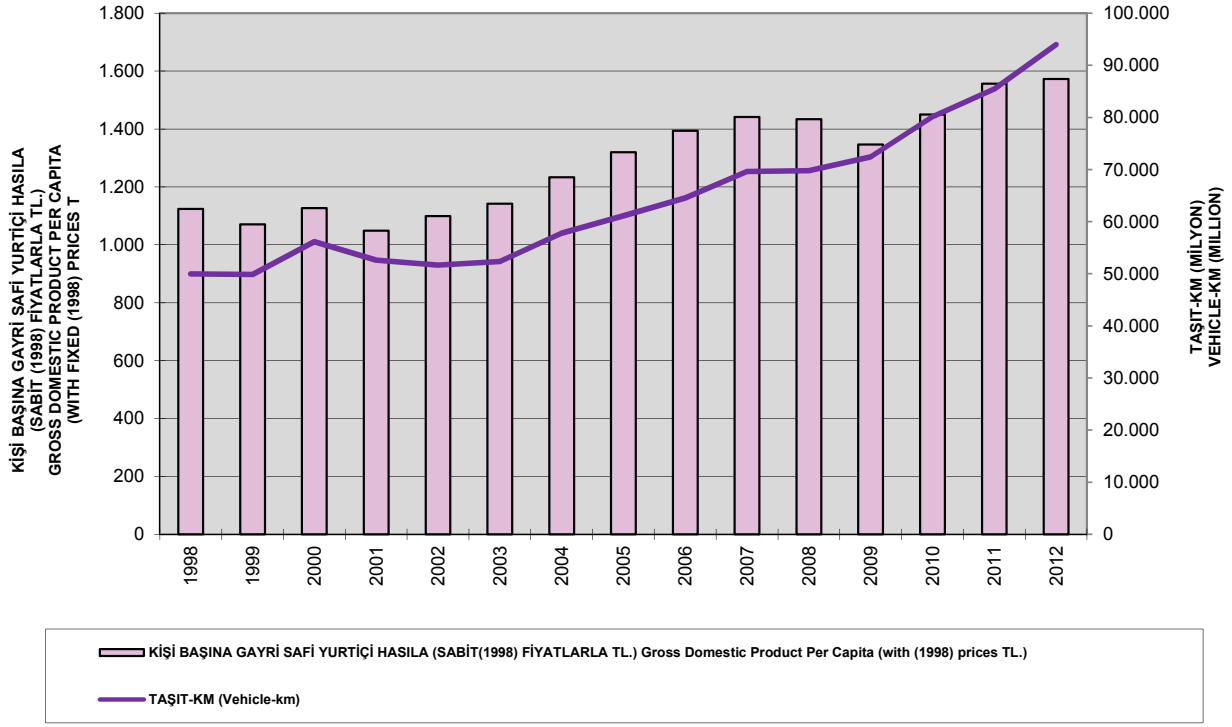




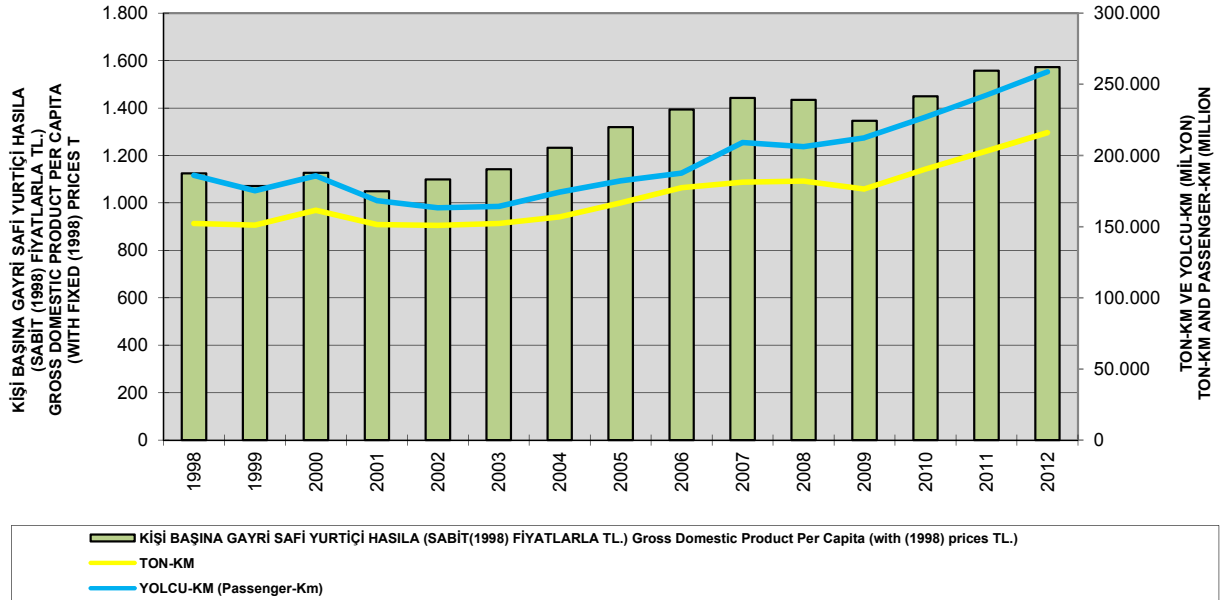




**TAŞIT-KM VE KİŞİ BAŞINA GAYRİ SAFİ YURTİÇİ HASILA KARŞILAŞTIRMASI**  
**Comparison of Vehicle-Km's and Gross Domestic Product Per Capita**



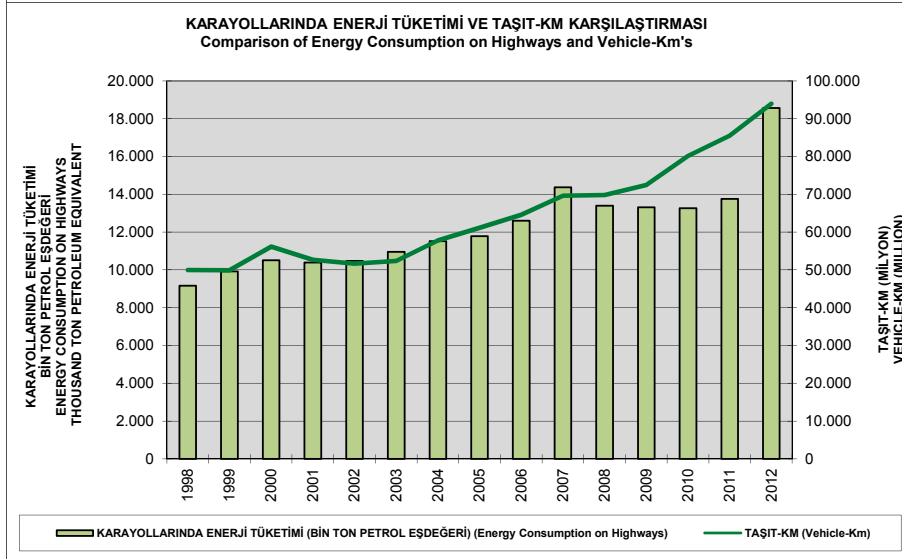
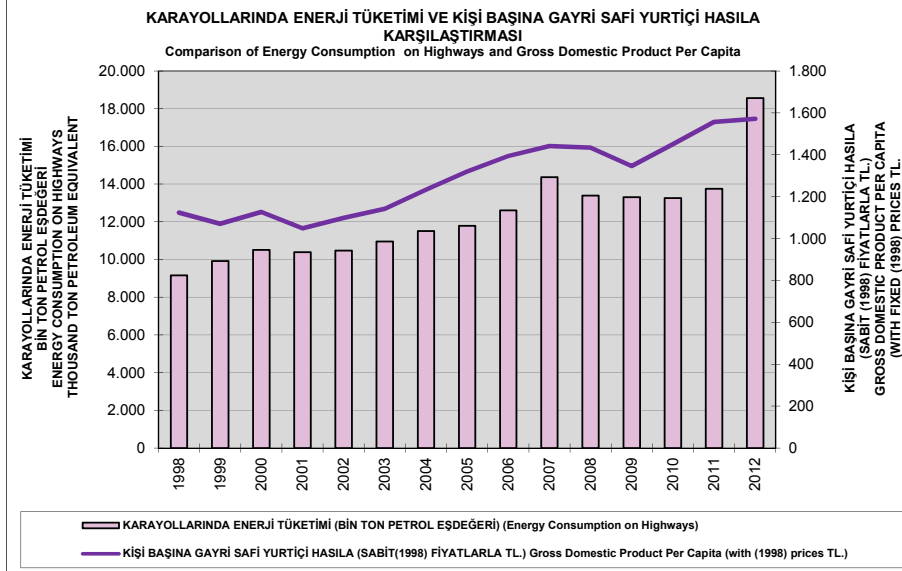
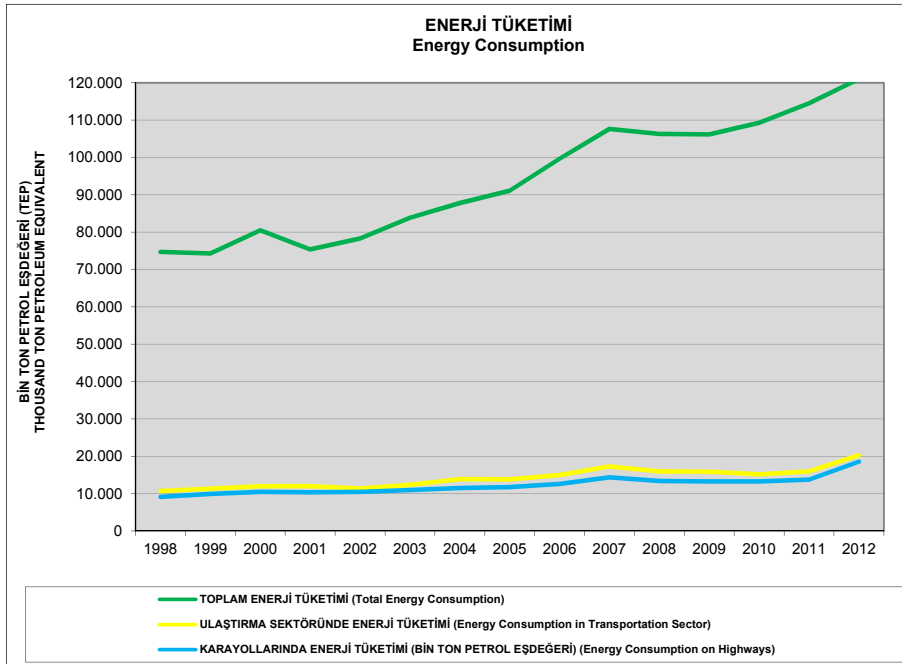
**TON-KM ,YOLCU -KM VE KİŞİ BAŞINA GAYRİ SAFİ YURTİÇİ HASILA KARŞILAŞTIRMASI**  
**Comparison of Ton-Km's, Passenger-Km's and Gross Domestic Product Per Capita**



\* Taşıt-Km, Ton-Km, Yolcu-Km değerleri Karayolları Genel Müdürlüğü sorumluluğu altındaki yol ağına ait verilerdir.

\* Vehicle-Km, Ton-Km, Passenger-Km values include the roads under the responsibility of General Directorate Of Highways.





\* Taşıt-Km, Ton-Km, Yolcu-Km değerleri Karayolları Genel Müdürlüğü sorumluluğu altındaki yol ağına ait verilerdir.

\* Vehicle-Km, Ton-Km, Passenger-Km values include the roads under the responsibility of General Directorate Of Highways.





**KARAYOLLARI GENEL MÜDÜRLÜĞÜ**

**İnönü Bulvarı 06100 Yücetepe/Ankara**  
**Tel : (312) 415 70 00 Faks : (312) 415 78 91**

**E Posta : [info@kgm.gov.tr](mailto:info@kgm.gov.tr)**

**Web Sayfası : <http://www.kgm.gov.tr>**